



RENÉTM of PARIS

HI-FASHION COLLECTION 2025

This isn't just a collection—it's a revolution in self-expression. Featuring cutting-edge craftsmanship, ultra-comfortable designs, and colors so vibrant they'll leave you breathless, Mika, Luca, and Nyx are here to inspire your next iconic look. Are you ready to embrace the extraordinary? The 2025 René of Paris Collection invites you to explore boldness like never before.

2025

MAY WE
INTRODUCE
YOU?



Left page colors shown: Tres Chocolate-R (left), White Rose Blond-R (middle), Melted Marshmallow (right)

Right page: Tres Chocolate-R (left), Watermelon-R (top inset), Spiced Brown (bottom inset)



The 2025 Rene of Paris Collection is here, blending timeless elegance with modern trends. Introducing three stunning new styles—**LUCA**, **MIKA**, and **NYX**—designed to elevate your look with versatile flair. This collection also debuts three luxurious colors: the luminous **Silver Oyster-R**, the rich **Tres Chocolate-R**, and the decadent **Truffle Ribbon-R**. Discover the perfect combination of innovation and sophistication with Rene of Paris.

RENÉ OF PARIS™
HI-FASHION COLLECTION 2025

NEW COLLECTION



Heat Friendly

LUCA 2413
PAGE 6-7



Heat Friendly

MIKA 2415
PAGE 8-9



Heat Friendly

NYX 2414
PAGE 10-11

LACE FRONT
+ MONO PART



14 EVANNA
2378

LACE FRONT + LACE PART



15 BLAIR
2405



16 CARSON
2403



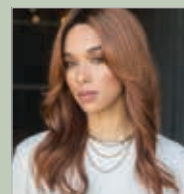
17 KAI
2383



17 LYNDON
2410



18 NOLAN
2399



19 SAGE
2400

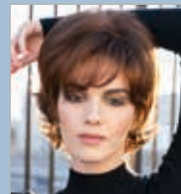
OPEN TOP AERO-LIGHT CAP



20 TARA
2402



21 JOEY
2325



21 SIERRA
2328

MACHINE-MADE



22 TYLER
2341



23 AMAL
2371



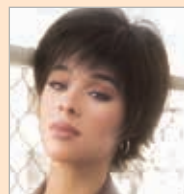
23 AUDREY
2350



24 BAILEY
2346



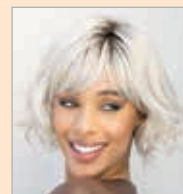
24 CAMERON
2362



25 COCO
2318



25 FELICITY
2353



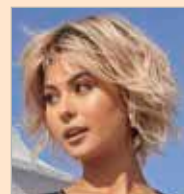
26 FENIX
2406



27 GIA
2359



27 JADE
2313



28 JOSS
2412



29 JUDE
2407



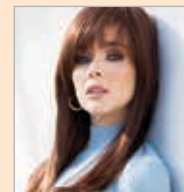
30 KASON
2409



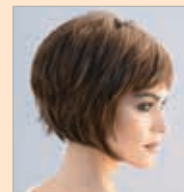
31 LAINE
2317



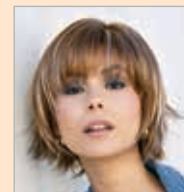
31 LIZZY
2347



32 MISHA
2363



32 NELL
2408



33 PAX
2404



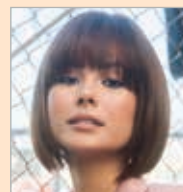
34 RINA
2381



34 SAMY
2340



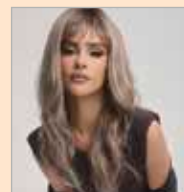
35 SHANNON
2342



35 TORI
2356



36 VERO
2411

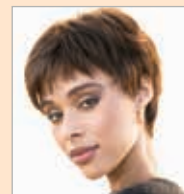


37 WREN
2401



38 WYATT
2396

HALOS



39 ZOE
2349



40 LONG
HALO 737



41 HALO
BOB 736



41 ROP HALO
733



42 WAVY BOB
HALO 738

TOP PIECES



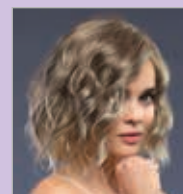
43 LONG TP
732



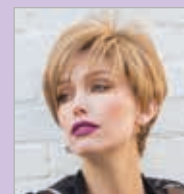
43 MEDIUM
TP 731



44 NEW ADDITION
770



45 EVANNA
TP 771



45 MODERN
TP 772

RENÉ of PARIS™
HI-FASHION COLLECTION 2025

INDEX

- 6 Available Colors
- 8 New Styles
- 16 Wigs
- 48 Halos
- 51 Top Pieces
- 54 Accessories

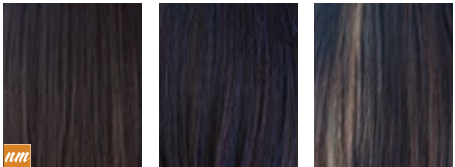
BRUNETTES



Black

Espresso

Cappuccino/
NM Cappuccino



Dark Chocolate/
NM Dark Chocolate

Blueberry Burst

Caramel Brown



Chocolate Frost

Mocha Brown

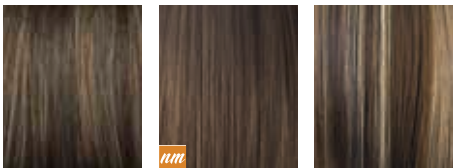
Coffee Latte/
NM Coffee Latte



Java Frost

Ginger Brown

Toasted Brown



Brown Sable

Medium Brown/
NM Medium Brown

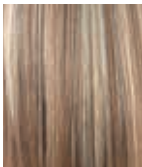
Iced Mocha



Light Chocolate

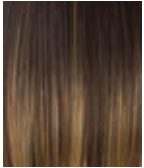
Almond Rocka

Marble Brown



Maple Sugar

HYBRANT UNDERLIGHTS



Honeycomb Brown

HYBRANT BRUNETTES



Coffee Latte-R

Chocolate Frost-R



Marble Brown-R/
NM Marble Brown-R

Iced Mocha-R



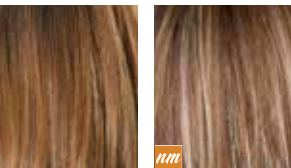
Almond Rocka-R

Truffle Brown-R



Maple Sugar-R

Maple Frost



Honey Brown-R

Icy Oak-SR/
NM Icy Oak-SR



NM Cashmere Brown-SR

Tres Chocolate-R

BLONDS



Honey Wheat

Mochaccino

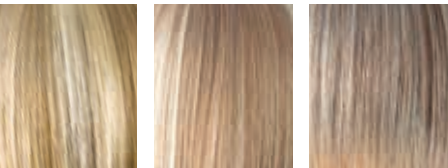
Butter Pecan



Harvest Gold

Vanilla Bean

Chai Cream



Creamy Toffee

Strawberry Swirl

Frosti Blond



Ice Blond

Vanilla Lush

Spring Honey/
Spring Honey-T
NM Spring Honey-T



Caramel Cream

Gold Blond

Sugar Cane



Creamy Blond

Peach Gold

Platinum Pearl/
NM Platinum Pearl

REDS



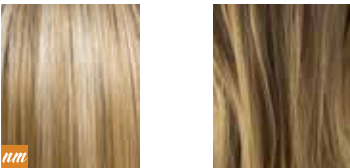
Mochaccino-R/
NM Mochaccino-R

Honey Wheat-R



Spring Honey-R

Bronze Hazelnut-R



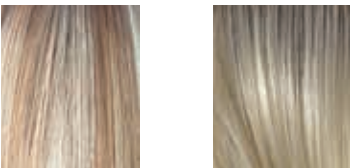
Creamy Toffee-R/
NM Creamy Toffee-R

Desert Sand-R



Rose Gold-R

Sugar Cane-R



Nutmeg-R/F

Seashell Blond-R



Champagne-R/
NM Champagne-R

Milky Opal-R/
NM Milky Opal-R



White Rose Blond-R

REDS



Burgundy Rosa

Garnet Glaze



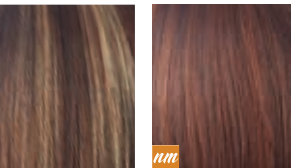
Red Pepper

Cayenne Spice



Rusty Red

Red Brown



Auburn Sugar

Chestnut/
NM Chestnut



Ginger Brown/
NM Ginger Brown

Raspberry Ice



Ginger Highlight

Irish Spice



Coconut Spice

Apricot Frost



Copper Glaze

HYBRANT REDS



Plumberry Jam-R

GRAYS



Icy Caviar

HYBRANT GRAYS



Smoky Gray-R

Illumina-R



Moonstone

Silver Stone-R



Sandy Silver™

Truffle Ribbon-R



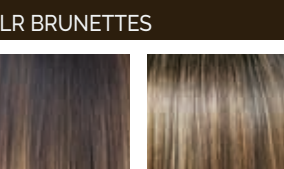
Silver Stone™/
NM Silver Stone™

Lilac Silver-R



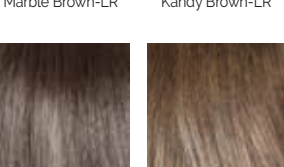
60

LR COLORS (LONG ROOTED)



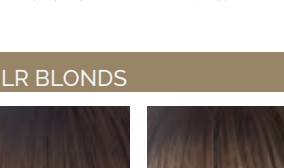
Marble Brown-LR

Kandy Brown-LR



NM Truffle Brown-LR

Milk Tea-LR



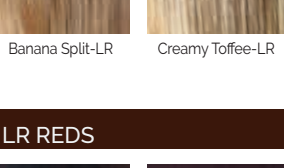
Mochaccino-LR

Macadamia-LR



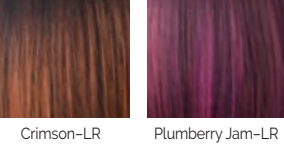
Banana Split-LR

Creamy Toffee-LR



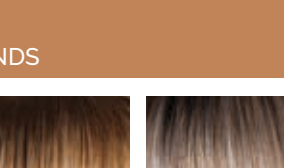
Crimson-LR

Plumberry Jam-LR



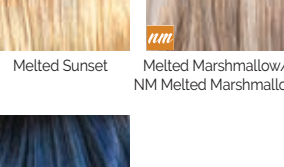
Mochaccino-LR

Macadamia-LR



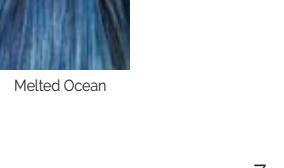
Banana Split-LR

Creamy Toffee-LR



Mochaccino-LR

Macadamia-LR



Banana Split-LR

Creamy Toffee-LR



Mochaccino-LR

Macadamia-LR

Banana Split-LR

Creamy Toffee-LR

Mochaccino-LR

Macadamia-LR

Banana Split-LR

Creamy Toffee-LR

Mochaccino-LR

Macadamia-LR

Banana Split-LR

Creamy Toffee-LR

Mochaccino-LR

Macadamia-LR

Banana Split-LR

Creamy Toffee-LR

Mochaccino-LR

Macadamia-LR

Banana Split-LR

Creamy Toffee-LR

Mochaccino-LR

Macadamia-LR

Banana Split-LR

Creamy Toffee-LR

Mochaccino-LR

Macadamia-LR

Banana Split-LR

Creamy Toffee-LR

Mochaccino-LR

Macadamia-LR

Banana Split-LR

Creamy Toffee-LR

Mochaccino-LR

Macadamia-LR

Banana Split-LR

Creamy Toffee-LR

Mochaccino-LR

Macadamia-LR

Banana Split-LR

Creamy Toffee-LR

Mochaccino-LR

Macadamia-LR

Banana Split-LR

Creamy Toffee-LR

Mochaccino-LR

Macadamia-LR

Banana Split-LR

Creamy Toffee-LR

Mochaccino-LR

Macadamia-LR

Banana Split-LR

Creamy Toffee-LR

Mochaccino-LR

Macadamia-LR

Banana Split-LR

Creamy Toffee-LR

Mochaccino-LR

Macadamia-LR

Banana Split-LR

Creamy Toffee-LR

Mochaccino-LR

Macadamia-LR

Banana Split-LR

Creamy Toffee-LR

Mochaccino-LR

Macadamia-LR

Banana Split-LR

Creamy Toffee-LR

Mochaccino-LR

Macadamia-LR

Banana Split-LR

Creamy Toffee-LR

Mochaccino-LR

Macadamia-LR

Banana Split-LR

Creamy Toffee-LR

Mochaccino-LR

Macadamia-LR

NEW COLLECTION

Heat Friendly

LUCA 2413



Cap Construction:
Machine Made
Fringe: 4.75" (12 cm)
Crown: 4.75" (12 cm)
Nape: 1.75" (4.4 cm)
Weight: 2.3 oz (65 g)

Available Colors:
Brunettes
Dark Chocolate
Ginger Brown
Medium Brown
Spiced Brown

Hybrant Brunettes
Tres Chocolate-R **NEW!**
Marble Brown-R

Blonds
Ice Blond
Spring Honey

Hybrant Blonds
White Rose Blond-R
Champagne-R
Creamy Toffee-R
Mochaccino-R
Rose Gold-R
Milky Opal-R

Reds
Shaded Amber
Grays
Sandy Silver™
Silver Stone™
60

Hybrant Grays
Silver Oyster-R **NEW!**
Truffle Ribbon-R **NEW!**

Melted Blends
Melted Marshmallow

Pastels
Watermelon-R

This modern tousled pixie style embraces all face shapes. Luca is machine made with adjustable tabs in the back nape area to allow a more comfortable fit.

Colors shown: Watermelon-R (left), Silver Oyster-R (right)

Colors shown: Truffle Ribbon-R (top inset), Watermelon-R (bottom inset), Silver Oyster-R (right)

NEW COLLECTION

Heat Friendly

MIKA 2415

Cap Construction:
Extended Lace Front
+ Partial Monofilament
Fringe: 8" (20.3 cm)
Crown: 10" (25.4 cm)
Nape: 8" (20.3 cm)
Weight: 4.0 oz (114 g)

Available Colors:

Brunettes

Spiced Brown
Medium Brown
Dark Chocolate
Ginger Brown

Hybrant Brunettes

Tres Chocolate-R **NEW!**
Marble Brown-R

Blonds

Ice Blond
Spring Honey

Hybrant Blonds

Milky Opal-R
White Rose Blond-R
Mochaccino-R
Rose Gold-R
Champagne-R
Creamy Toffee-R

Reds

Shaded Amber

Grays

Silver Stone™
Sandy Silver™
60

Hybrant Grays

Truffle Ribbon-R **NEW!**
Silver Oyster-R **NEW!**

Melted Blends

Melted Marshmallow

Pastels

Watermelon-R

The face framing layers and side-swept fringe provides stylish modern versatility. Mika is an extended lace front and partial monofilament with extended nape tabs and pull adjusters.



Colors shown: Truffle Ribbon-R (main, top inset),
Truffle Ribbon-R (bottom inset)

Colors shown: Silver Oyster-R (left), Tres Chocolate-R (right)

NEW COLLECTION

Heat Friendly
NYX 2414



This ready to wear wig is a choppy beach wave bob. The Nyx creates a natural look and contemporary vibe that's easy to wear.



Cap Construction:
Extended Lace Front
+ Partial Monofilament
Fringe: 11.5" (29.2 cm)
Crown: 11.5" (29.2 cm)
Nape: 4" (10.2 cm)
Weight: 4.0 oz (113 g)

Available Colors:
Brunettes
Spiced Brown
Dark Chocolate
Ginger Brown
Medium Brown

Hybrant Brunettes
Tres Chocolate-R **NEW!**
Marble Brown-R

Blonds
Ice Blond
Spring Honey

Hybrant Blonds
Champagne-R
Creamy Toffee-R
Milky Opal-R
White Rose Blond-R
Mochaccino-R
Rose Gold-R

Reds
Shaded Amber

Grays
Truffle Ribbon-R **NEW!**
Silver Stone™
Sandy Silver™
60

Hybrant Grays
Silver Oyster-R **NEW!**

Melted Blends
Melted Marshmallow

Pastels
Watermelon-R



EVANNA 2378

Salon finish beach wave curls fall shoulder length in this trendy bob.

Cap Construction:
Lace front + monopart
Fringe: 11.5" (29.2cm)
Crown: 11.5" (29.2cm)
Nape: 5.5" (14cm)
Weight: 3.56oz (101g)

Color Shown:
Mochaccino-LR

Available Colors:
Brunettes
 Ginger Brown
 Dark Chocolate

LR Brunettes
Marble Brown-LR

Hybrant Under Lights: Honeycomb Brown

Blonds
Ice Blond

Hybrant Blonds
Rose Gold-R
Champagne-R

LR Blonds
Mochaccino-LR
Creamy Toffee-LR

Reds
Rusty Red

LR Reds
Plumberry Jam-LR

Melted Tones
Melted Sunset
Melted Marshmallow
Melted Ocean

Pastels:
Pastel Blue-R



BLAIR 2405

A layered and natural looking hair style with softly feathered ends.

Cap Construction:
Lace Front/Lace Part
Fringe: 9.8" (25cm)
Crown: 17.7" (45cm)
Nape: 11.8" (30cm)
Weight: 5.8oz (167g)

Color Shown:
Maple Frost (main)
Bronze Hazelnut-R (insets)

Available Colors:

Brunettes
Brown Sable
Chocolate Frost
Dark Chocolate
Ginger Brown

Hybrant Brunettes
Icy Oak-SR
Marble Brown-R
Maple Frost
Honey Brown-R
Maple Sugar-R

Blonds

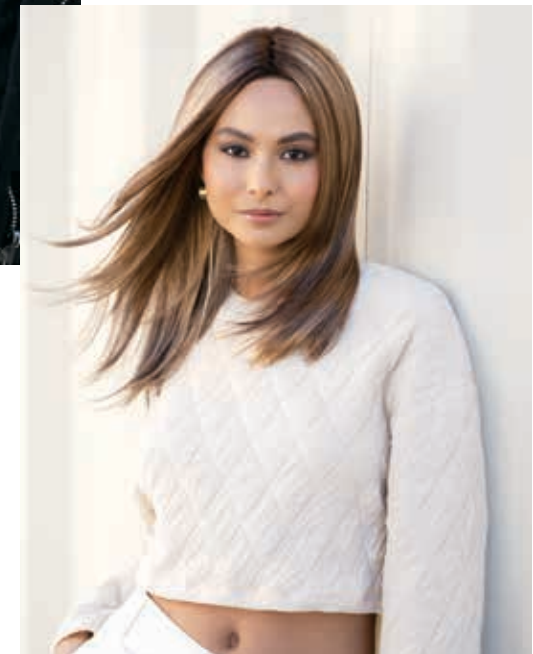
Spring Honey-T
Creamy Blond
Ice Blond

Hybrant Blonds
Mochaccino-R
Bronze Hazelnut-R
Milky Opal-R
Seashell Blond-R
Champagne-R
Creamy Toffee-R
Rose Gold-R

Hybrant Reds
Auburn Sugar-R
Shaded Amber

Melted

Melted Marshmallow



CARSON 2403

A mid length bob with slight movement that frames the face beautifully.

Cap Construction:
Lace front + lace part
Fringe: 9.8" (25cm)
Crown: 9.8" (25cm)
Nape: 4.3" (11cm)
Weight: 3.1oz (89g)

Colors Shown:
Spring Honey-T

Available Colors:
Brunettes
Dark Chocolate
Ginger Brown

Hybrant Brunettes
Honey Brown-R
Marble Brown-R
Maple Frost

LR Brunettes
Milk Tea-LR

Blonds
Ice Blond
Spring Honey-T

Hybrant Blonde:
Champagne-R
Seashell Blond-R
Desert Sand-R
Mochaccino-R
Creamy Toffee-R
Rose Gold-R

Hybrant Reds
Shaded Amber

Melted
Melted Marshmallow

Hybrant Grays
Moonstone
Silver Stone-R



KAI 2383

Sharp, blunt cut bob for sleek sophistication.

Cap Construction:
Lace front + lace part
Fringe: 11" (28cm)
Crown: 12" (30.5cm)
Nape: 2.25" (5.7cm)
Weight: 3.53oz (100g)

Color Shown:
Dark Chocolate

Available Colors:
Brunettes
Mocha Brown
Ginger Brown
Dark Chocolate

LR Brunettes
Marble Brown-LR

Blonds
Ice Blond

Hybrant Blonds
Rose Gold-R
Spring Honey-R
Nutmeg-R

LR Blonds
Mochaccino-LR
Creamy Toffee-LR

LR Reds
Plumberry Jam-LR

Melted Tones
Melted Sunset
Melted Marshmallow
Melted Ocean

Grays
Silver Stone™

LYNDON 2410

Romantic soft waves and face framing layers create an alluring appearance. The NM fiber adds an extra dimension that makes waves look naturally textured.

Cap Construction:
Extended lace front + part
Weight: 6.3oz (180g)
Fringe: 6.9" (17.5cm)
Crown: 14.6" (37cm)
Nape: 14.6" (37cm)

Color Shown:
NM Melted Marshmallow (main)

Available Colors:
NM Brunettes
NM Cappucino
NM Coffee Latte
NM Dark Chocolate
NM Medium Brown

NM Hybrant Brunettes
NM Cashmere Brown-SR
NM Icy Oak-SR
NM Marble Brown-R
NM Truffle Brown-LR

NM Blondes
NM Platinum Pearl
NM Spring Honey-T

NM Hybrant Blondes
NM Champagne-R
NM Creamy Toffee-R
NM Milky Opal-R
NM Mochaccino-R

NM Reds
NM Chestnut
NM Ginger Brown

NM Melted
NM Melted Cinnamon
NM Melted Marshmallow

NM Grays
NM Silver Stone™





NOLAN 2399

Silky smooth, salon finish straight.
Pull off an instantly stunning
appearance.

Cap Construction:
Lace Front + lace part
Fringe: 9.8-11" (25-28cm)
Crown: 13" (33cm)
Nape: 13.8" (35cm)
Weight: 4.9-5.3oz (140-150g)

Colors Shown:
Milk Tea-LR (main, left inset)
Dark Chocolate (right inset)

Available Colors:

Brunettes
Dark Chocolate
Coffee Latte

Hybrant Brunettes
Marble Brown-R

LR Brunettes
Milk Tea-LR

Blonds
Spring Honey-T
Peach Gold

Hybrant Blonds
Rose Gold-R
Mochaccino-R
Nutmeg-R
Champagne-R
Creamy Toffee-R

Reds
Red Brown

Hybrant Reds
Auburn Sugar-R

LR Reds
Plumberry Jam-LR

Hybrant Grays
Moonstone

Melted
Melted Marshmallow
Melted Coconut



SAGE 2400

Long wavy style with curtain bangs
that flatter your face.

Cap Construction:
Lace front + lace part
Fringe: 6" (15.2cm)
Crown: 15" (38.1cm)
Nape: 15" (38.1cm)
Weight: 6.05oz (171.5g)

Colors Shown:
Shaded Amber (main, top inset)
Moonstone (bottom inset)

Available Colors:
Brunettes
Dark Chocolate
Ginger Brown

Hybrant Brunettes
Honey Brown-R
Marble Brown-R

Blonds
Ice Blond

Hybrants Blonds
Mochaccino-R
Milky Opal-R
Champagne-R
Creamy Toffee-R
Spring Honey-R
Rose Gold-R

LR Blondes
Milk Tea-LR

Hybrant Reds
Shaded Amber

Hybrant Grays
Moonstone

Melted
Melted Coconut
Melted Marshmallow

Pastels
Watermelon-R
Pastel Rainbow-R





TARA 2402

Wavy bob that gives you that fresh out of salon look.

Cap Construction:
Lace front + lace part
Fringe: 9.8" (25cm)
Crown: 9" (23cm)
Nape: 1.9" (5cm)
Weight: 3.1oz (89g)

Colors Shown:
Seashell Blond-R

Available Colors:
Brunettes
Dark Chocolate
Ginger Brown

Hybrant Brunettes
Honey Brown-R
Marble Brown-R
Maple Frost

LR Brunettes
Milk Tea-LR

Blonds
Ice Blond
Spring Honey-T

Hybrant Blonde:
Champagne-R
Seashell Blond-R
Desert Sand-R
Mochaccino-R
Creamy Toffee-R
Rose Gold-R

Hybrant Reds
Shaded Amber

Melted
Melted Marshmallow

Hybrant Grays
Moonstone
Silver Stone-R



JOEY 2325

A free-spirited mix of textured curls that can be tamed or tousled.

Cap Construction:
Open Top Aero-Light Cap
Fringe: 3.75" (9.5cm)
Crown: 4" (10cm)
Nape: 3.25" (8cm)
Weight: 2oz (56g)

Color Shown:
Sandy Silver™

Available Colors:
Brunettes
Dark Chocolate
Ginger Brown
Marble Brown
Toasted Brown
Maple Sugar

Blonds
Harvest Gold
Frosti Blond
Strawberry Swirl
Spring Honey
Creamy Toffee

Grays
Sandy Silver™
Silver Stone™

Aero-Light
Cap



SIERRA 2328

A buoyant arrangement of tousled texture and body.

Cap Construction:
Open Top Aero-Light Cap
Fringe: 5" (12.5cm)
Crown: 3.5" (9cm)
Nape: 3.5" (9cm)
Weight: 2.22oz (63g)

Color Shown:
Chestnut

Available Colors:
Brunettes
Dark Chocolate
Coffee Latte
Ginger Brown
Marble Brown
Iced Mocha
Toasted Brown

Blonds
Harvest Gold
Mochaccino
Frosti Blond
Strawberry Swirl
Spring Honey
Creamy Toffee

Reds
Auburn Sugar
Chestnut

Aero-Light
Cap

TYLER 2341

Tapered layers and flipped ends combine to create a sophisticated style.



Cap Construction:
Open Top Aero-Light Cap
Fringe: 3.5" (9cm)
Crown: 3.5" (9cm)
Nape: 2.25" (5.5cm)
Weight: 2.01oz (57g)

Color Shown:
Ginger Brown

Available Colors:
Brunettes
Dark Chocolate
Coffee Latte
Ginger Brown
Marble Brown
Iced Mocha
Maple Sugar

*Aero-Light
Cap*

Blonds
Harvest Gold
Mochaccino
Strawberry Swirl
Spring Honey
Creamy Toffee
Creamy Blond

Reds
Ginger Highlight
Auburn Sugar
Copper Glaze

Grays
Silver Stone™
60

AMAL 2371

Shaggy bob with loose romantic curls and softly layered fringe.

Cap Construction:
Machine-made
Fringe: 7.5" (19cm)
Crown: 10.3" (26cm)
Nape: 4.2" (10.5cm)
Weight: 3.6oz (103g)

Color Shown:
Creamy Toffee-R

Available Colors:
Brunettes
Cappuccino
Coffee Latte
Ginger Brown

Blonds
Spring Honey
Creamy Blond

Hybrant Blonds
Creamy Toffee-R

LR Blonds
Macadamia-LR

Reds
Chestnut

Grays
Silver Stone™



AUDREY 2350

Smooth layered bob with angled sides.

Cap Construction:
Machine-made
Fringe: 4.75" (12cm)
Crown: 6" (15cm)
Nape: 2.25" (6cm)
Weight: 2.93oz (83g)

Color Shown:
Chocolate Frost

Available Colors:
Brunettes
Expresso
Dark Chocolate
Coffee Latte
Ginger Brown
Marble Brown
Iced Mocha
Chocolate Frost
Toasted Brown
Maple Sugar

Hybrant Brunettes
Iced Mocha-R
Maple Sugar-R

Blonds
Mochaccino
Vanilla Bean
Spring Honey
Creamy Toffee
Creamy Blond

Hybrant Blonds
Mochaccino-R
Nutmeg-R
Creamy Toffee-R

Reds
Auburn Sugar
Chestnut
Copper Glaze

Grays
Sandy Silver™
Silver Stone™





BAILEY 2346

Easy flowing layers define this trendy look.

Cap Construction:
Machine-made
Fringe: 3.5" (9cm)
Crown: 6.5" (16.5cm)
Nape: 6.5" (16.5cm)
Weight: 3.49oz (99g)

Color Shown:
Iced Mocha

Available Colors:

Brunettes

Cappucino
Dark Chocolate
Coffee Latte
Ginger
Marble Brown
Iced Mocha
Toasted Brown
Maple Sugar

Hybrant Brunettes

Iced Mocha-R
Maple Sugar-R

Blonds

Butter Pecan
Mochaccino
Strawberry Swirl
Vanilla Lush
Spring Honey
Creamy Toffee
Creamy Blond

Hybrant Blonds

Mochaccino-R
Nutmeg-R
Creamy Toffee-R

Reds

Ginger Highlight
Red Pepper
Auburn Sugar
Chestnut
Irish Spice
Copper Glaze
Apricot Frost

Hybrant Reds

Auburn Sugar-R



CAMERON 2362

Casual movement characterizes this irresistible bob.

Cap Construction:
Machine-made
Fringe: 5" (13cm)
Crown: 6.5" (16.5cm)
Nape: 4" (10cm)
Weight: 3.21oz (91g)

Color Shown:
Java Frost

Available Colors:

Brunettes

Espresso
Cappucino
Dark Chocolate
Coffee Latte
Java Frost
Almond Rocka
Ginger Brown

Marble Brown
Iced Mocha
Chocolate Frost
Toasted Brown
Maple Sugar

Hybrant Brunettes

Iced Mocha-R
Maple Sugar-R

Blonds

Mochaccino
Honey Wheat
Chai Cream
Spring Honey
Sugar Cane
Creamy Toffee
Creamy Blond

Hybrant Blonds
Mochaccino-R
Nutmeg-R
Creamy Toffee-R

Reds

Cayenne Spice
Auburn Sugar
Razberry Ice
Chestnut
Copper Glaze
Coconut Spice

Hybrant Reds

Auburn Sugar-R



COCO 2318

A carefree style with charming texture.

Cap Construction:
Machine-made
Fringe: 4" (10cm)
Crown: 5" (12.5cm)
Nape: 2" (5cm)
Weight: 2.58oz (73g)

Color Shown:
Dark Chocolate

Available Colors:

Brunettes

Dark Chocolate
Coffee Latte
Ginger Brown
Marble Brown
Iced Mocha
Maple Sugar

Hybrant Brunettes

Iced Mocha-R
Maple Sugar-R

Blonds

Harvest Gold
Mochaccino
Frosti Blond
Vanilla Lush
Caramel Cream
Spring Honey
Creamy Toffee
Creamy Blond

Hybrant Blonds

Mochaccino-R
Nutmeg-R
Creamy Toffee-R

Reds

Auburn Sugar
Chestnut
Copper Glaze

Hybrant Reds

Auburn Sugar-R

Grays

Silver Stone™

FELICITY 2353

A luxurious look with layered soft waves.

Cap Construction:
Machine-made
Fringe: 5.25" (13.5cm)
Crown: 10" (25.5cm)
Nape: 14" (35.25cm)
Weight: 4.48oz (127g)

Color Shown:
Irish Spicer

Available Colors:

Brunettes

Cappucino
Dark Chocolate
Coffee Latte
Ginger Brown
Marble Brown
Iced Mocha
Toasted Brown
Maple Sugar

Blonds

Mochaccino
Vanilla Lush
Spring Honey
Creamy Toffee

Reds

Ginger Highlight
Auburn Sugar
Chestnut
Copper Glaze
Irish Spice



FENIX 2406

Wavy/curly bob that delivers beautiful softness from the curls.

Cap Construction:
Machine-Made
Fringe: 3.9" (10cm)
Crown: 9" (23cm)
Nape: 1.5" (4cm)
Weight: 3.3-3.7oz (95-105g)

Color Shown:
Milky Opal-R (main, left inset)
Bronze Hazelnut-R (right inset)

Available Colors:

Brunettes
Brown Sable
Chocolate Frost
Dark Chocolate
Ginger Brown

Hybrant Brunettes
Icy Oak-SR
Maple Frost
Marble Brown-R
Honey Brown-R
Maple Sugar-R

Blonds
Spring Honey-T
Creamy Blond
Ice Blond

Hybrant Blonds
Bronze Hazelnut-R
Milky Opal-R
Seashell Blond-R
Champagne-R
Creamy Toffee-R
Rose Gold-R
Mochaccino-R

Hybrant Reds
Auburn Sugar-R
Shaded Amber

Melted
Melted Marshmallow





GIA 2359

A chic tapered look with effortless elegance.

- Cap Construction:**
Machine-made
Fringe: 6" (15cm)
Crown: 3.25" (8.5cm)
Nape: 2" (5cm)
Weight: 2.26oz (64g)

Color Shown:
Copper Glaze

Available Colors:

Brunettes
Dark Chocolate
Coffee Latte
Chocolate Frost
Almond Rocka
Ginger Brown
Marble Brown
Iced Mocha

Hybrant Brunettes
Marble Brown-R
Maple Sugar-R
- Blonds**
Mochaccino
Honey Wheat
Chai Cream
Spring Honey
Sugar Cane
Creamy Toffee
Creamy Blond

Hybrant Blonds
Champagne-R
Mochaccino-R
Creamy Toffee-R

Reds
Cayenne Spice
Auburn Sugar
Razberry Ice
Chestnut
Copper Glaze

Grays
Sandy Silver™
Silver Stone™



JADE 2313

Feathery layers lend a “retro” finish to a classic shoulder length cut.

- Cap Construction:**
Machine-made
Fringe: 5.5" (14cm)
Crown: 8" (20.5cm)
Nape: 9" (23cm)
Weight: 3.99oz (113g)

Color Shown:
Mochaccino

Available Colors:

Brunettes
Espresso
Dark Chocolate
Coffee Latte
Ginger Brown
Marble Brown
Iced Mocha
Maple Sugar
- Blonds**
Harvest Gold
Mochaccino
Vanilla Lush
Vanilla Bean
Spring Honey
Creamy Toffee
Creamy Blond



JOSS 2412

Discover a fresh, fun wavy style! This angled cute wavy bob creates a cool, stylish look. The fringe is designed to give you a youthful appearance. It's going to be your new daily must-have.



Cap Construction:
Machine made
Weight: 3.0oz (85g)
Fringe: 4" (10.2cm)
Crown: 7" (17.8cm)
Nape: 3" (7.6cm)

Color Shown:
Shaded Amber (main)
Spring Honey (inset)

Available Colors:
Brunettes
Dark Chocolate
Ginger Brown

Hybrant Brunettes
Marble Brown-R

Blondes
Ice Blond
Spring Honey

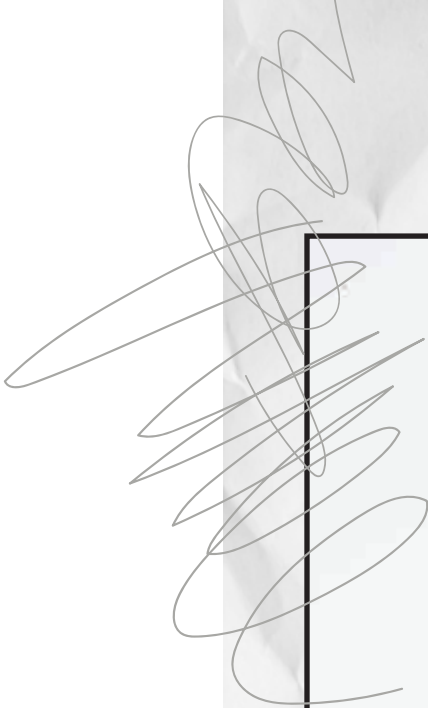
Hybrant Blondes
Creamy Toffee-R
Mochaccino-R
Rose Gold-R
White Rose Blond-R **NEW!**

Hybrant Reds
Shaded Amber

Greys
Silver Stone™

Melted
Melted Marshmallow

Pastels
Watermelon-R



JUDE 2407

A feathered bob with long layers and has amazing movement.



Cap Construction:
Machine-Made
Fringe: 3.5" (9cm)
Crown: 6.3-7.5" (16-19cm)
Nape: 4.3" (11cm)
Weight: 2.8-3oz (81-87g)

Color Shown:
Brown Sable

Available Colors:
Brunettes
Brown Sable
Chocolate Frost
Dark Chocolate
Ginger Brown

Hybrant Brunettes
Icy Oak-SR
Maple Frost
Marble Brown-R
Honey Brown-R
Maple Sugar-R

Blonds
Spring Honey-T
Creamy Blond
Ice Blond

Hybrant Blonds
Bronze Hazelnut-R
Milky Opal-R
Seashell Blond-R
Champagne-R
Creamy Toffee-R
Rose Gold-R
Mochaccino-R

Hybrant Reds
Auburn Sugar-R
Shaded Amber

Melted
Melted Marshmallow



KASON 2409

This modern short pixie provides a sophisticated vibe and many styling options. The soft texture and tapered fringe complement all face shapes.

Cap Construction:
Machine made
Weight: 2.4oz (68g)
Fringe: 3.3 - 4.1" (8.5 - 10.5cm)
Crown: 3.3 - 4.1" (8.5 - 10.5cm)
Nape: 3" (7.5cm)

Color Shown:
Icy Oak-SR

Available Colors:

Brunettes
Chocolate Frost
Dark Chocolate
Ginger Brown
Iced Mocha

Hybrant Brunettes

Icy Oak-SR
Marble Brown-R
Truffle Brown-R

Blondes

Spring Honey
Platinum Pearl

Hybrant Blondes

Creamy Toffee-R
Milky Opal-R
Mochaccino-R

Reds

Chestnut
Dark Rust

Grays

Icy Caviar
60
Sandy Silver™
Silver Stone™
Silver Mink

Hybrant Grays

Lilac Silver-R
Silver Stone-R

Melted

Melted Cinnamon
Melted Marshmallow



LAINÉ 2317

Soft layers with razor finished edges flatters this classic design.

Cap Construction:
Machine-made
Fringe: 9" (23cm)
Crown: 14" (35.5cm)
Nape: 9" (23cm)
Weight: 4.83oz (137g)

Color Shown:
Ginger Brown

Available Colors:

Brunettes
Espresso
Cappuccino
Coffee Latte
Ginger Brown
Marble Brown
Maple Sugar

Hybrant Brunettes
Iced Mocha-R

Blonds

Mochaccino
Spring Honey
Creamy Toffee
Creamy Blond

Hybrant Blondes

Honey Wheat-R
Creamy Toffee-R

Reds

Chestnut

Hybrant Reds

Almond Spice-R



LIZZY 2347

Short and saucy with razor finished layers. Just spike it up and go!

Cap Construction:
Machine-made
Fringe: 3.5" (9cm)
Crown: 3.5" (9cm)
Nape: 2" (5cm)
Weight: 2.01oz (57g)

Color Shown:
Nutmeg-R

Available Colors:

Brunettes
Espresso
Coffee Latte
Ginger Brown
Marble Brown
Iced Mocha
Toasted Brown
Maple Sugar

Hybrant Brunettes
Iced Mocha-R
Maple Sugar-R

Blonds

Harvest Gold
Mochaccino
Strawberry Swirl
Spring Honey
Creamy Blond

Hybrant Blondes

Mochaccino-R
Nutmeg-R
Creamy Toffee-R

Reds

Burgundy Rosa
Ginger Highlight
Auburn Sugar
Razberry Ice
Chestnut
Copper Glaze

Grays

Silver Stone™



MISHA 2363

Long tresses with fringe are both timeless and flattering.

- Cap Construction:
Machine-made
Fringe: 4.25" (11cm)
Crown: 9.75" (25cm)
Nape: 11.5" (29.5cm)
Weight: 5.11oz (145g)

Color Shown:
Almond Rocka

Available Colors:
Brunettes
Espresso
Cappucino
Dark Chocolate
Coffee Latte
Java Frost
Almond Rocka
Ginger Brown
Maple Sugar
- Blonds**
Mochaccino
Chai Cream
Spring Honey
Creamy Toffee
Creamy Blond

Reds
Garnet Glaze
Chestnut



NELL 2408

Micro bob with a full fringe, Nell is sleek and super sophisticated.

- Cap Construction:
Machine-Made
Fringe: 2.3" (6cm)
Crown: 5.3" (13.5cm)
Nape: 1.5" (4cm)
Weight: 2.5-2.7oz (72-79g)

Color Shown:
Auburn Sugar-R (top)
Sandy Silver™ (bottom)

Available Colors:
Brunettes
Brown Sable
Dark Chocolate
Ginger Brown
- Hybrant Brunettes**
Icy Oak-SR
Maple Frost
Maple Sugar-R
Marble Brown-R
Honey Brown-R

Blonds
Spring Honey-T
Creamy Blond
Ice Blond

Hybrant Blonds
Bronze Hazelnut-R
Seashell Blond-R
Creamy Toffee-R
Mochaccino-R
Rose Gold-R
- Hybrant Reds**
Auburn Sugar-R
Shaded Amber

Grays
Sandy Silver™
Silver Stone™

Melted
Melted Marshmallow



PAX 2404

Beautiful, layered bob with a feathered full fringe.

- Cap Construction:
Machine-Made
Fringe: 3.9" (10cm)
Crown: 7" (18cm)
Nape: 2.3" (6cm)
Weight: 2.8oz (81g)
- Color Shown:**
Icy Oak-SR (main, right insets)
Ice Blond (left inset)
- Available Colors:**
Brunettes
Brown Sable
Chcocolate Frost
Dark Chocolate
Ginger Brown
- Hybrant Brunettes**
Icy Oak-SR
Maple Frost
Marble Brown-R
Honey Brown-R
Maple Sugar-R
- Blonds**
Spring Honey-T
Ice Blond
- Hybrant Blonds**
Bronze Hazelnut-R
Milky Opal-R
Seashell Blond-R
Champagne-R
Creamy Toffee-R
Mochaccino-R
Rose Gold-R
- Hybrant Reds**
Auburn Sugar-R
Shaded Amber
- Melted**
Melted Marshmallow





RINA 2381

Feathery layers with graduated back and soft wispy fringe.

Cap Construction:
Machine-made
Fringe: 4" (10.2cm)
Crown: 4" (10.2cm)
Nape: 2" (5.1cm)
Weight: 2.19oz (62g)

Color Shown:
Silver Stone™

Available Colors:
Brunettes
Mocha Brown
Ginger Brown
Caramel Brown

Blonds
Ice Blond

Hybrant Blonds
Mochaccino-R
Creamy Toffee-R
Rose Gold-R

Reds
Rusty Red

Grays
Silver Stone™



SAMY 2340

A spiky, short cut with tapered nape and sides.

Cap Construction:
Machine-made
Fringe: 4" (10cm)
Crown: 4" (10cm)
Nape: 2" (5cm)
Weight: 2.15oz (61g)

Color Shown:
60

Available Colors:
Brunettes
Dark Chocolate
Coffee Latte
Ginger Brown
Marble Brown
Iced Mocha
Toasted Brown
Maple Sugar

Blonds
Frosti Blond
Mochaccino
Vanilla Bean
Spring Honey
Creamy Toffee

Reds
Copper Glaze

Grays
Sandy Silver™
Silver Stone™
60



SHANNON 2342

A structured chin length bob with tapered ends.

Cap Construction:
Machine-made
Fringe: 4.5" (11.5cm)
Crown: 7.5" (19cm)
Nape: 4" (10cm)
Weight: 3.17oz (90g)

Color Shown:
Medium Brown

Available Colors:
Brunettes
Expresso
Cappuccino
Dark Chocolate
Coffee Latte
Ginger Brown
Marble Brown
Medium Brown
Toasted Brown
Maple Sugar

Blonds
Mochaccino
Strawberry Swirl
Spring Honey
Creamy Toffee
Creamy Blond

Reds
Ginger Highlight
Razberry Ice



TORI 2356

A striking angled bob with blunt fringe.

Cap Construction:
Machine-made
Fringe: 4" (10cm)
Crown: 7" (17.5cm)
Nape: 2" (5cm)
Weight: 3oz (85g)

Color Shown:
Toasted Brown

Available Colors:
Brunettes
Black
Expresso
Cappuccino
Dark Chocolate
Coffee Latte
Ginger Brown
Marble Brown
Iced Mocha
Chocolate Frost
Toasted Brown
Maple Sugar

Hybrant Brunettes
Iced Mocha-R
Maple Sugar-R

Blonds
Butter Pecan
Mochaccino
Strawberry Swirl
Vanilla Lush
Spring Honey
Creamy Toffee
Creamy Blond

Hybrant Blonds
Mochaccino-R
Nutmeg-R
Creamy Toffee-R

Reds
Ginger Highlight
Auburn Sugar
Razberry Ice
Chestnut
Irish Spice
Copper Glaze

Hybrant Reds
Auburn Sugar-R

WREN 2401

Long tousled beach wave with a feathered fringe.

Cap Construction:
Machine-made
Fringe: 4.25" (10.7cm)
Crown: 15" (38.1cm)
Nape: 17" (43.1cm)
Weight: 5.46oz (154.7g)

Colors Shown:
Mochaccino-R

Available Colors:
Brunettes
Dark Chocolate
Ginger Brown

Hybrant Brunettes
Marble Brown-R

Blonds
Ice Blond

Hybrant Blonds
Mochaccino-R
Milky Opal-R
Champagne-R
Creamy Toffee-R
Rose Gold-R
Spring Honey-R

Hybrant Reds
Shaded Amber

Hybrant Greys
Moonstone

Melted
Melted Coconut
Melted Marshmallow

Pastels:
Watermelon-R
Pastel Rainbow-R



VERO 2411

This chic and contemporary style is perfect for all seasons. The wavy bob provides flirty bounce and movement. The lace front creates a natural appearance.

Cap Construction:
Lace front + part
Weight: 4.4oz (125g)
Fringe: 10.5" (26.7cm)
Crown: 12.5" (31.8cm)
Nape: 6.25" (15.9cm)

Color Shown:
Watermelon-R (left main, inset)
Dark Chocolate (middle)
White Rose Blond-R (right)

Available Colors:
Brunettes
Dark Chocolate
Ginger Brown

Hybrant Brunettes
Marble Brown-R

Blonds
Ice Blond
Spring Honey

Hybrant Blonds
Creamy Toffee-R
Mochaccino-R
Rose Gold-R
White Rose Blond-R

Hybrant Reds
Shaded Amber

Greys
Silver Stone™

Melted
Melted Marshmallow

Pastels
Watermelon-R



ZOE 2349

A modern pixie enhanced by multiple layers and textures.

Cap Construction:
Machine-made
Fringe: 3.5" (9cm)
Crown: 3.25" (8.5cm)
Nape: 2" (5cm)
Weight: 1.8oz (51g)

Color Shown:
Coffee Latte

Available Colors:
Brunettes
Dark Chocolate
Coffee Latte
Ginger Brown
Marble Brown
Iced Mocha
Maple Sugar

Blonds
Harvest Gold
Mochaccino
Strawberry Swirl
Spring Honey
Creamy Blond

Reds
Ginger Highlight
Auburn Sugar

Grays
Midnight Pearl
Sandy Silver™
Silver Stone™
60



WYATT 2396

Chin length textured bob with a trendy, side swept fringe. This modern style creates natural volume and movement.

Cap Construction:
Machine-made
Fringe: 5" (12.7cm)
Crown: 9" (23cm)
Nape: 3" (7.6cm)
Weight: 3.0oz (84g)

Color Shown:
Pastel Rainbow-R

Available Colors:
Brunettes
Dark Chocolate
Ginger Brown

LR Brunettes
Marble Brown-LR

Blonds
Ice Blond

Hybrant Blonds
Spring Honey-R
Rose Gold-R

LR Blonds
Creamy Toffee-LR
Mochaccino-LR

Melted
Melted Marshmallow
Melted Coconut

LR Reds
Plumberry Jam-LR

Pastels:
Watermelon-R

Grays
Silver Stone™



Comfy, light and stylish Halos were designed to be worn under a hat, scarf or wrap. A detachable fringe gives you a choice to change up your look to complement any outfit. A great alternative to a full wig.



LONG HALO 737

Our popular long style is now available in Halo! Use it as a regular Halo or as an alternative way to change your look for a day.

Overall: 16.1" (41cm)
Weight: 3.7 oz (104g)

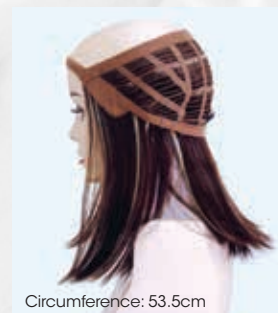
*Detachable bangs
*Hat not included

Color Shown:
Creamy Toffee

Available Colors:
Brunettes
Cappucino
Dark Chocolate
Ginger Brown
Maple Sugar
Marble Brown
Toasted Brown
Honey Brown

Hybrant Brunettes
Marble Brown-R

Blonds
Creamy Blond
Creamy Toffee
Mochaccino
Spring Honey



Circumference: 53.5cm



HALO BOB 736

A refreshingly original halo hair piece complete with chin length layers and a detachable fringe.

Overall: 10" (24.4cm)
Weight: 2.9oz (82g)
*Detachable Bangs
*Hat not included

Color Shown:
Coffee Latte

Available Colors:
Brunettes
Cappucino
Dark Chocolate
Coffee Latte
Ginger Brown

Marble Brown
Toasted Brown
Maple Sugar

Blonds
Mochaccino
Spring Honey
Creamy Toffee
Creamy Blond

Reds
Coconut Spice



Circumference: 53.5cm



ROP HALO 733

A comfy and stylish Halo with detachable fringe. Can be worn under a hat or scarf to complement any outfit!

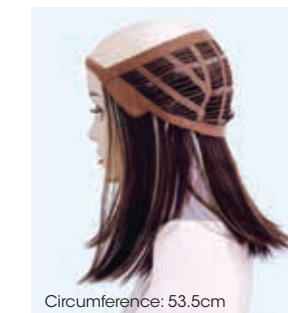
Overall: 14" (35.5cm)
Weight: 2.9oz (82g)

*Detachable bangs
*Hat not included

Color Shown:
Mochaccino

Available Colors:
Brunettes
Cappucino
Dark Chocolate
Ginger Brown
Marble Brown
Toasted Brown
Maple Sugar

Blonds
Mochaccino
Spring Honey
Creamy Toffee



Circumference: 53.5cm



WAVY BOB HALO 738

This soft wave bob compliments your face and neck line with a stylish look.

Overall: 10" (3.9cm)
Weight: 2.5oz (72g)

*Detachable bangs
*Scarf not included

Color Shown:
Maple Sugar

Available Colors:
Brunettes
Cappucino
Dark Chocolate
Ginger Brown
Maple Sugar
Marble Brown
Toasted Brown

Hybrant Brunettes
Honey Brown

Blonds
Creamy Blond
Creamy Toffee
Mochaccino
Spring Honey



Circumference: 53.5cm



Boost your confidence and look your best. Our quality hair enhancements are designed to create instant transformation that will make you shine.

Light, breathable base constructions matched with touchable hair in a variety of beautifully rich colors provide the ultimate versatility and comfort.

LONG TP 732

Adds long luxurious coverage from the fringe to the crown.

Base Construction:
Machine-made
Hair Length: 18" (45.5cm)
Weight: 2.5oz (70g)

Color Shown:
Marble Brown-LR

Available Colors:
Brunettes
Expresso
Dark Chocolate
Ginger Brown
Medium Brown

Hybrant Brunettes
Coffee Latte-R
Iced Mocha-R
Maple Sugar-R

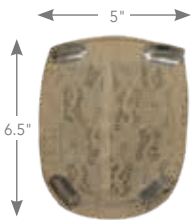
Blonds
Harvest Gold
Spring Honey
Gold Blond

LR Brunettes
Marble Brown-LR

Hybrant Blonds
Nutmeg-R
Creamy Toffee-R

LR Blonds
Macadamia-LR

Hybrant Reds
Almond Spice-R



Before



MEDIUM TP 731

An enhancer that provides extra volume and fullness.

Base Construction:
Machine-made
Hair Length: 8" (20.5cm)
Weight: 1.52oz (43g)

Color Shown:
Cappucino

Available Colors:
Brunettes
Expresso
Cappucino
Dark Chocolate
Ginger Brown
Medium Brown

Hybrant Brunettes
Coffee Latte-R
Iced Mocha-R
Maple Sugar-R

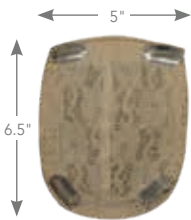
LR Brunettes
Marble Brown-LR

Blonds
Harvest Gold
Spring Honey
Gold Blond

Hybrant Blonds
Nutmeg-R
Creamy Toffee-R

Hybrant Reds
Almond Spice-R

Grays
Silver Stone™



Before





NEW ADDITION

770

A great enhancer designed to provide extra volume or a fresh look.

Base Construction:
Machine-made
Hair Length: 4" (10cm)
Crown: 4.5" (11.5cm)
Weight: 1oz (28g)

Color Shown:
Sandy Silver™

Available Colors:
Brunettes
Espresso
Dark Chocolate
Coffee Latte
Ginger Brown
Marble Brown
Medium Brown
Light Chocolate

Blonds
Harvest Gold
Spring Honey
Creamy Toffee
Gold Blond

Grays
Silver Stone™
Sandy Silver™
60



EVANNA TP 771

One of our top-selling styles now available as a top piece! Gorgeous salon finish beach waves for a shaggy shoulder-length look.

Base Construction:
Lace front + lace part
Fringe: 11.5" (29.2cm)
Crown: 11.5" (29.2cm)
Weight: 2.08oz (59g)

Color Shown:
Ice Blond

Available Colors:
Brunettes
Dark Chocolate
Ginger Brown
Medium Brown

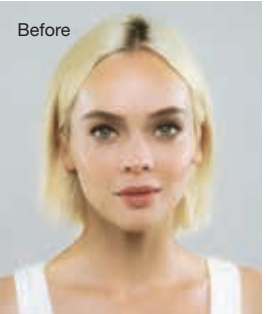
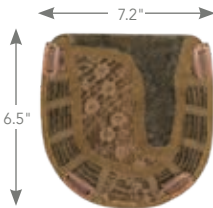
LR Brunettes
Marble Brown-LR

Blonds
Ice Blond

Hybrant Blonds
Rose Gold-R

LR Blonds
Mochaccino-LR
Creamy Toffee-LR

Grays
Silver Stone™



MODERN TP 772

Flawless enhancer adding dimension and density to an everyday look.

Base Construction:
Machine-made
Fringe: 7.08" (18cm)
Crown: 3.93" (10cm)
Weight: 1.44oz (41g)

Color Shown:
Champagne-R

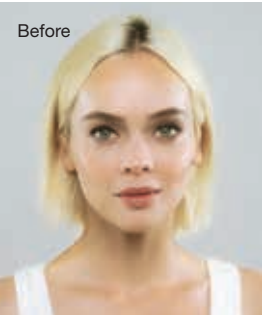
Available Colors:
Brunettes
Dark Chocolate
Ginger Brown
Medium Brown

Hybrant Brunettes
Marble Brown-R
Maple Sugar-R

Blonds
Harvest Gold
Nutmeg-F
Spring Honey

Hybrant Blond:
Champagne-R
Creamy Toffee-R

Grays
Silver Stone™
60



ACCESSORIES



8119
17" MANNEQUIN



8123
21" MANNEQUIN



9580
WIG CAP

Available Colors:
Beige, Black,
Brown



9581
WIG LINER
Open Mesh

Available Colors:
Beige, Black, Brown



8113 MANNEQUIN
HOOK



9594 WIDE
TOOTH WOODEN
COMB



9586
BULK BEIGE
WIG CAP
(Sold in 12 pcs)



9584
ROP WIG STAND



8128
18" WHITE
MANNEQUIN



8129
18" GRAY
MANNEQUIN
with logo



8130
18" BLACK
MANNEQUIN
with logo



8131
18" WHITE
MANNEQUIN
with logo



9587
ROP WIG LIFT COMB



9591
ROP FOLDING BRUSH



9561
RENE OF PARIS FLAT IRON



965
WIRE BRUSH



9582
WIG STAND
PACKAGE

3pc package contains
colors: Black, Blue &
Gray

Sold separately:
9583
BLACK, BLUE, GRAY

Convenient "snap together" stand for wig storage or service.



9511
SWATCHES

The color
swatches let you
see your perfect
hair match.

RENÉ of PARIS™
MAINTENANCE TOOLS



ROP Prepare
Shampoo
9950 | 8 oz.
9954 | 2 oz.



ROP Light
Conditioner
9953 | 8 oz.
9955 | 2 oz.



ROP Revive
Liquid
Enhancement
9951 | 8 oz.



ROP Protect
Holding Spray
9952 | 8 oz.
9956 | 2 oz.

Rene of Paris Prepare Shampoo

This luxurious shampoo is formulated with the ultimate in moisture replenishing cleansers. Rene of Paris Prepare Shampoo helps maintain the smoothness, strength and polish of your wig/hairpiece.

The gentle combination of plant and vegetable extracts, along with natural essential oils and vitamins, provides a gentle but thorough cleansing of your wig/hairpiece. The results will revolutionize how you feel.

Rene of Paris Light Conditioner

Rene of Paris Conditioner for synthetic wigs revitalizes dull hair leaving it softer, shinier and easy to manage.

Rene of Paris Revive Liquid Enhancement

The finest advanced liquid developed for synthetic fiber hair. Rene of Paris Revive Liquid Enhancement will revive your wig/hairpiece and give it the brand new feel. Not only helps eliminate frizz while adding luster, texture and volume, but also protects your wig/hairpiece from the daily stresses.

Rene of Paris Protect Holding Spray

The final step in maintaining and styling your wig/hairpiece. This holding spray adds shine while gently, yet firmly, holding your desired style.

We are delighted that you have chosen to become one of our valued customers. We appreciate your business as well as any inquiries regarding the following:

APPLICABILITY:

1. The following terms and conditions ("Terms") are the only terms which govern the sale of the goods ("Goods") by Aderans Hair Goods, Inc. ("AHG") to its customers (each referred to hereafter as "Buyer," or "You"). Notwithstanding anything herein to the contrary, if a written contract signed by both parties is in existence covering the sale of the Goods covered hereby, the terms and conditions of said contract shall prevail to the extent they are inconsistent with these Terms.

2. These Terms, together with the applicable invoice and the Statement of Policy defined below (collectively, this "Agreement"), comprise the entire agreement between the parties, and supersede all prior or contemporaneous understandings, agreements, negotiations, representations and warranties, and communications, both written and oral. These Terms prevail over any of Buyer's general terms and conditions of purchase regardless whether or when Buyer has submitted its purchase order or such terms. Acceptance of Buyer's purchase order or fulfillment of Buyer's order does not constitute acceptance of any of Buyer's terms and conditions and does not serve to modify or amend these Terms.

ACCEPTANCE OF PURCHASE ORDER. AHG has the right, in its sole discretion, to accept or reject any purchase order issued by You. AHG may accept any purchase order by confirming the order (whether by written confirmation, invoice or otherwise) or by delivering the Goods, whichever occurs first. No purchase order is binding on AHG unless accepted by AHG.

PRICES. You shall purchase the Goods from AHG at the prices set forth in AHG's price list in effect at the time that AHG accepts Your purchase order ("Prices"). Prices are exclusive of, and You are solely responsible for, and shall pay, any and all taxes, with respect to, or measured by, the manufacture, sale, shipment, use or Price of the Goods; provided, however, that You shall not be responsible for any taxes imposed on, or with respect to, AHG's income, revenues, gross receipts, personnel or real or personal property or other assets.

PAYMENT TERMS: AHG accepts payment by Visa, MasterCard, AMEX, Discover, money order, wire transfer and COD. Upon approval, credit terms may be available.

CREDIT PURCHASES If You wish to apply for an AHG 30-day open account (NET-30), contact Your AHG sales representative and request a credit application.

SHIPPING/HANDLING: You will pay for all shipping charges and insurance costs. AHG offers shipping via UPS next day air, 2-3 day air, and ground. There is a handling charge of \$1.00 for all orders. For each purchase order accepted by AHG, AHG may, in its sole discretion, without liability or penalty, make partial shipments of Goods to You. Each shipment will constitute a separate sale and You will pay for the units shipped whether such shipment is in whole or partial fulfillment of a purchase order.

TRANSFER OF TITLE & RISK OF LOSS: Title passes to You upon delivery of the Goods to the address You specified in the purchase order. Risk of loss or damage to the Goods passes to You upon AHG's tender of such units to the carrier at AHG's location in Chatsworth, CA.

STATEMENT OF POLICY: You must comply with the Statement of Policy and Guidelines for Using Aderans' Trademarks and Copyrights (the "Statement of Policy") which was provided to You and which may be modified or updated by AHG from time to time in its sole discretion.

RETURN POLICY: Returns will not be accepted unless pre-authorized by (AHG). Requests must be made within 30 days from receipt of Goods. Upon approval and receipt of the authorization for return label, Goods meeting the following conditions may be returned for an exchange or direct credit to Your account (freight prepaid by Buyer). NO cash refunds! If an item is to be exchanged, new shipping and handling charges will be added.

1. A copy of Your invoice must accompany all returns. The authorization for return label must be placed on the outside of the box (complete with the authorization number) and Your return address. If not, the box will be refused.

2. Returned Goods must be in MINT CONDITION. Mint condition is defined by AHG as: no missing tags or labels, the hair net is not removed, item(s) are not combed/fluffed or tried on by a customer. All returns must be in original shipping box. There is a restocking fee of \$10.00 for EACH piece returned.

3. AHG has carefully designed its product packaging to protect the product integrity. AHG is not responsible for damage to or problems with any product where the product and/or shipment packaging has been changed per Your request. No returns will be accepted under these conditions.

4. Shipping and handling fees are non-refundable.

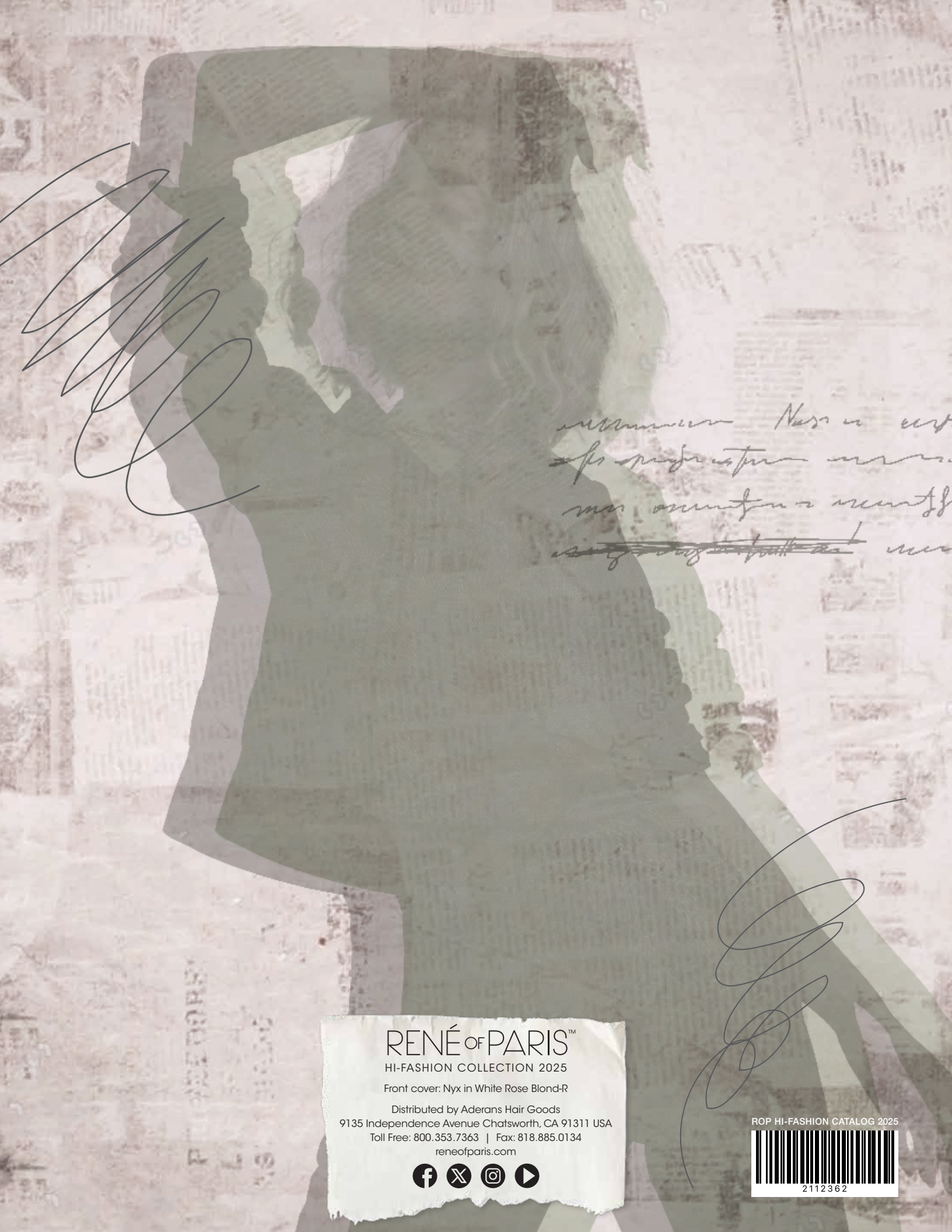
5. Any DISCONTINUED items are not returnable.

6. AHG is not responsible for lost return packages.

It is recommended that You keep proper Proof-of-Delivery. Goods not meeting the above stipulations will be refused. AHG will not accept returns more than 30 days after receipt of Goods. If there is a factory defect or an incorrectly shipped item due to our error, a full exchange or credit will be applied directly to Your account. Note: If an item is returned for a "defective" credit and upon examination found not to be defective, credit will only be given for the item's original price (providing it still meets the above standards), and a \$10.00 restocking charge will be applied. Any additional product not authorized for return will be sent back.

NOTE: Colors shown in this catalog may not reflect actual color of product. RENÉ OF PARIS is a trademark or registered trademark of Aderans Hair Goods, Inc. and/or Aderans Co., Ltd. in the United States and other countries.

CHRISTINE HEADWEAR and the Christine Headwear logo are trademarks and/or registered trademarks of The Headwear Company in the United States and other countries.



*...Hass in ...
...
...
...
...
...*

...

RENÉ OF PARIS™
HI-FASHION COLLECTION 2025
Front cover: Nyx in White Rose Blond-R
Distributed by Aderans Hair Goods
9135 Independence Avenue Chatsworth, CA 91311 USA
Toll Free: 800.353.7363 | Fax: 818.885.0134
reneofparis.com

ROP HI-FASHION CATALOG 2025



2112362